

Inlet filter elements

Filterfit supplies a range of inlet filter elements suitable for use with blowers and compressors. We supply industries including cement works, flour mills, food manufacturing, timber mills, plastics, foundries and many more.

The filters are manufactured using materials suitable for use within the environment or application in which they are installed.

Shown below and following next page is a range of available media and standard available sizes. As well as these, non-standard sizes can be manufactured in various configurations including: steel end



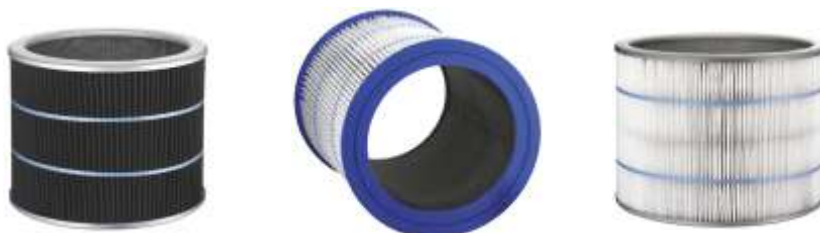
caps, stainless steel end caps, inner or outer guards, gaskets and pre-filter sleeves to your specification.

In addition, non-standard cartridges can also be manufactured to include any of the media listed below.

- ➔ Spun bond polyester with antistatic PTFE laminate and various other treatments
- ➔ Polypropylene felt
- ➔ Microfibre glass
- ➔ Nomex felt and pleatable Nomex
- ➔ Dacron
- ➔ Woven cotton
- ➔ Woven polypropylene
- ➔ Woven stainless steel
- ➔ Electrostatic media



Speak to any of our sales staff about correct media selection for your application.



Pleated inlet filter elements

Part No.	Model ref.	Media	Size			Capacity (CFM)	Capacity (m3/hr)	Pressure drop (Pa)	Efficiency	Additional pressure drop with pre-filter sleeve fitted (Pa)
			I.D. (mm)	O.D. (mm)	H. (mm)					
16-0000	MF0	PE felt	41	73	40	10	17	125	93-95% @ 5µm	50
16-0001	MF1	PE felt	63	106	89	40	68	125	93-95% @ 5µm	50
16-0002	MF2	PE felt	86	128	89	50	85	125	93-95% @ 5µm	50
16-0003	MF3	PE felt	104	162	141	300	510	125	93-95% @ 5µm	50
16-0004	MF4	PE felt	129	187	167	450	765	125	93-95% @ 5µm	50
16-0005	MF5	PE felt	165	222	197	650	1105	125	93-95% @ 5µm	50
16-0006	MF6	PE felt	190	248	235	900	1530	125	93-95% @ 5µm	50
16-0007	MF7	PE felt	244	343	294	1100	1869	125	93-95% @ 5µm	50
16-0008	MF8	PE felt	269	394	351	1800	3060	125	93-95% @ 5µm	50
16-0010	MF10	PE felt	368	495	492	3000	5100	125	93-95% @ 5µm	50
16-0011	MF10/600	PE felt	368	495	600	3600	6117	125	93-95% @ 5µm	50
16-0012	MF12	PE felt	489	590	467	3600	6120	125	93-95% @ 5µm	50
16-0014	MF14	PE felt	363	740	467	5500	9530	125	93-95% @ 5µm	50
16-0016	MF16	PE felt	636	740	543	7000	11900	125	93-95% @ 5µm	50

Part No.	Model ref.	Media	Size			Capacity (CFM)	Capacity (m3/hr)	Pressure drop (Pa)	Efficiency	Additional pressure drop with pre-filter sleeve fitted (Pa)
			I.D. (mm)	O.D. (mm)	H. (mm)					
16-0101	MF1	foam	63	106	89	40	68	75	86-90% @ 5µm	50
16-0102	MF2	foam	86	128	89	50	85	75	86-90% @ 5µm	50
16-0103	MF3	foam	104	162	141	300	510	75	86-90% @ 5µm	50
16-0104	MF4	foam	129	187	167	450	765	75	86-90% @ 5µm	50
16-0105	MF5	foam	165	222	197	650	1105	75	86-90% @ 5µm	50
16-0106	MF6	foam	190	248	235	900	1530	75	86-90% @ 5µm	50
16-0107	MF7	foam	244	343	294	1100	1869	75	86-90% @ 5µm	50
16-0108	MF8	foam	269	394	351	1800	3060	75	86-90% @ 5µm	50
16-0110	MF10	foam	368	495	492	3000	5100	75	86-90% @ 5µm	50
16-0111	MF10/600	foam	368	495	600	3600	6117	75	86-90% @ 5µm	50
16-0112	MF12	foam	489	590	467	3600	6120	75	86-90% @ 5µm	50
16-0114	MF14	foam	363	740	467	5500	9530	75	86-90% @ 5µm	50
16-0116	MF16	foam	636	740	543	7000	11900	75	86-90% @ 5µm	50

Part No.	Model ref.	Media	Size			Capacity (CFM)	Capacity (m3/hr)	Pressure drop (Pa)	Efficiency	Additional pressure drop with pre-filter sleeve fitted (Pa)
			I.D. (mm)	O.D. (mm)	H. (mm)					
16-0201	MF1	paper	63	106	89	40	68	125	99.96% @ 5µm	50
16-0202	MF2	paper	86	128	89	50	85	125	99.96% @ 5µm	50
16-0203	MF3	paper	104	162	141	300	510	125	99.96% @ 5µm	50
16-0204	MF4	paper	129	187	167	450	765	125	99.96% @ 5µm	50
16-0205	MF5	paper	165	222	197	650	1105	125	99.96% @ 5µm	50
16-0206	MF6	paper	190	248	235	900	1530	125	99.96% @ 5µm	50
16-0207	MF7	paper	244	343	294	1100	1869	125	99.96% @ 5µm	50
16-0208	MF8	paper	269	394	351	1800	3060	125	99.96% @ 5µm	50
16-0210	MF10	paper	368	495	492	3000	5100	125	99.96% @ 5µm	50
16-0211	MF10/600	paper	368	495	600	3600	6117	125	99.96% @ 5µm	50
16-0212	MF12	paper	489	590	467	3600	6120	125	99.96% @ 5µm	50
16-0214	MF14	paper	363	740	467	5500	9530	125	99.96% @ 5µm	50
16-0216	MF16	paper	636	740	543	7000	11900	125	99.96% @ 5µm	50

Part No.	Model ref.	Media	Size			Capacity (CFM)	Capacity (m3/hr)	Pressure drop (Pa)	Efficiency	Additional pressure drop with pre-filter sleeve fitted (Pa)
			I.D. (mm)	O.D. (mm)	H. (mm)					
16-0401	MF1	PE spunbond	63	106	89	40	68	175	98.00% @ 5µm	50
16-0402	MF2	PE spunbond	86	128	89	50	85	175	98.00% @ 5µm	50
16-0403	MF3	PE spunbond	104	162	141	300	510	175	98.00% @ 5µm	50
16-0404	MF4	PE spunbond	129	187	167	450	765	175	98.00% @ 5µm	50
16-0405	MF5	PE spunbond	165	222	197	650	1105	175	98.00% @ 5µm	50
16-0406	MF6	PE spunbond	190	248	235	900	1530	175	98.00% @ 5µm	50
16-0407	MF7	PE spunbond	244	343	294	1100	1869	175	98.00% @ 5µm	50
16-0408	MF8	PE spunbond	269	394	351	1800	3060	175	98.00% @ 5µm	50
16-0410	MF10	PE spunbond	368	495	492	3000	5100	175	98.00% @ 5µm	50
16-0411	MF10/600	PE spunbond	368	495	600	3600	6117	175	98.00% @ 5µm	50
16-0412	MF12	PE spunbond	489	590	467	3600	6120	175	98.00% @ 5µm	50
16-0414	MF14	PE spunbond	363	740	467	5500	9530	175	98.00% @ 5µm	50
16-0416	MF16	PE spunbond	636	740	543	7000	11900	175	98.00% @ 5µm	50