

Synthetic meshes

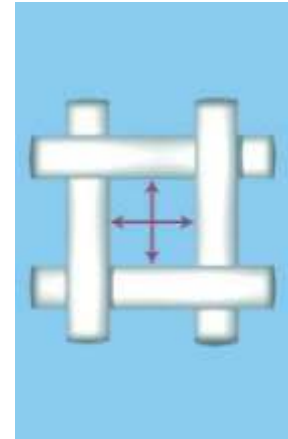
For accurate, high-capacity particle separation, Filterfit suggests precision woven SaatiMil meshes. The SaatiMil line is ideal for the exacting screening and separating procedures used in the food, chemical, pharmaceutical and mining industries.

SaatiMil™

Applications include flour milling, abrasive sifting, chemical classification, pharmaceutical separation, sand sifting, and corn, sugar and rice separation. Throughout the world, SaatiMil screens are known for their high capacity, longevity, perfect fit, and competitive pricing.

Fabric selection:

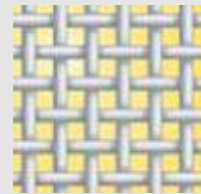
SaatiMil fabrics are available in a variety of fibre sizes for a given opening size. A large fibre improves screen life, but decreases screen flow capacity. A smaller fibre will provide greater screening capacity but will wear out faster.



Flour milling fabrics:

The flour milling industry has traditionally used a unique numbering system to denote variations in fibre sizes.

The **SaatiMil XXX** grades have a large fibre size and are used for hard grades of wheat and durum or other abrasive grains.



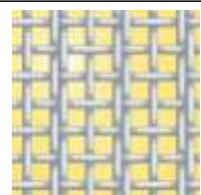
The **SaatiMil GG** or **Grit Gauze** grades are woven with coarser opening sizes with a smaller fibre to provide a higher screening capacity.



SaatiMil HT are high-capacity screens in medium and finer opening sizes. They have a higher tensile strength and better abrasive resistance than the SaatiMil XX grades. They are ideal for the newer type sifting frames, which have glued-on screens requiring high tensile stretching.



SaatiMil XX fabrics are woven with two smaller diameter fibres adjacent to one another. This construction provides a rougher surface to the screen, which is beneficial when sieving soft wheat, bakery flour, and other products that are difficult to sift.



SaatiMil meshes are manufactured to international standard ISO 9001

Monofilament woven meshes

Part No.	Description	Mesh opening (micron)	Open area (%)	Mesh count (cm)	Thread diameter (micron)
14-1006	PA 6 XX	212	49	76/81	(90+2x60)/90
14-1008	PA 7 XX	200	48	33/36	(80+2x61)/80
14-1010	PA 8 XX	180	46	36/40	(80+2x61)/70
14-1011	PA 8.5XX	160	44	39/43	(70+2x61)/70
14-1014	PA 9 XX	150	44	41/48	(70+2x61)/61
14-1016	PA 9.5 XX	140	43	43/50	(61+2x60)/60
14-1018	PA 10 XX	132	44	47/52	(61+2x50)/61
14-1020	PA 10.5 XX	125	40	49/54	(61+2x50)/61
14-1022	PA 11 XX	118	42	50/59	(61+2x50)/50
14-1024	PA 12 XX	112	40	52/62	(61+2x50)/50
14-1026	PA 12.5 XX	106	40	56/64	(61+2x44)/50
14-1028	PA 13 XX	100	38	57/67	(61+2x50)/50
14-1030	PA 14 XX	95	38	61/69	(50+2x44)/50
14-1034	PA 15 XX	85	34	74/97	(50+2x43)/50

Part No.	Description	Mesh opening (micron)	Open area (%)	Mesh count (cm)	Thread diameter (micron)
14-2000	PA 3 XXX	300	46	23	140
14-2002	PA 4 XXX	280	43	24	140
14-2004	PA 5 XXX	255	46	27	120
14-2006	PA 6 XXX	212	40	30	120
14-2008	PA 7 XXX	200	39	31	120
14-2010	PA 8 XXX	180	43	36	100
14-2012	PA 8.5 XXX	160	37	38	100
14-2014	PA 9 XXX	155	39	41	90
14-2016	PA 9.5 XXX	140	36	43	90
14-2018	PA 10 XXX	135	39	46	80
14-2020	PA 10.5 XXX	125	38	49	80
14-2022	PA 11 XXX	115	35	51	80
14-2024	PA 12 XXX	115	37	55	70
14-2026	PA 12.5 XXX	105	32	55	80
14-2028	PA 13 XXX	100	32	57	70
14-2030	PA 14 XXX	90	35	66	61
14-2032	PA 14.5 XXX	90	30	62	70
14-2038	PA 17 XXX	80	32	71	61

Part No.	Description	Mesh opening (micron)	Open area (%)	Mesh count (cm)	Thread diameter (micron)
14-4000	3 HT	300	51	23.5	120
14-4002	4 HT	280	51	25	120
14-4004	5 HT	250	51	28.5	100
14-4006	7 HT	195	43	34	100
14-4008	8 HT	180	43	36	100
14-4010	8.5 HT	160	43	43	80
14-4012	9 HT	150	51	48	61
14-4014	9.5 HT	140	41	45	80
14-4016	10 HT	135	42	49	70
14-4018	10.5 HT	125	41	51	70
14-4020	11 HT	118	41	53	70
14-4022	12 HT	112	42	57.5	61
14-4024	13 HT	100	38	62	61

Monofilament woven meshes

Part No.	Description	Mesh opening (micron)	Open area (%)	Mesh count (cm)	Thread diameter (micron)
14-3000	PA 10 GG	1920	64	4.25	500
14-3002	PA 12 GG	1800	61	4.5	500
14-3004	PA 14 GG	1560	61	5	450
14-3006	PA 15 GG	1450	62	5.5	400
14-3008	PA 16 GG	1320	56	6	400
14-3010	PA 17 GG	1250	56	6.5 x 5.75	400
14-3012	PA 18 GG	1170	55	6.5	400
14-3016	PA 20 GG	1030	57	7.5	325
14-3018	PA 22 GG	950	58	8	300
14-3020	PA 23 GG	900	56	8.3	300
14-3022	PA 24 GG	830	55	9	280
14-3024	PA 26 GG	790	54	9.5	280
14-3026	PA 27 GG	730	55	10.5	250
14-3028	PA 28 GG	700	54	10.75	250
14-3030	PA 30 GG	660	52	11	250
14-3032	PA 31 GG	630	51	11.5	250
14-3034	PA 32 GG	600	50	12	250
14-3036	PA 34 GG	560	51	13	225
14-3038	PA 36 GG	530	49	13.5	225
14-3040	PA 38 GG	500	47	14	225
14-3042	PA 40 GG	475	49	15	195
14-3044	PA 42 GG	440	46	16	195
14-3046	PA 44 GG	420	46	16.5	195
14-3048	PA 45 GG	400	46	17	195
14-3050	PA 47 GG	375	43	18	180
14-3052	PA 48 GG	365	43	18	155
14-3054	PA 50 GG	355	51	20	150
14-3056	PA 52 GG	335	49	21	150
14-3058	PA 54 GG	310	47	22	150
14-3062	PA 58 GG	300	46	23	140
14-3064	PA 60 GG	280	43	24	140
14-3066	PA 62 GG	270	41	24	150
14-3068	PA 64 GG	265	47	26	120
14-3070	PA 66 GG	255	46	27	120
14-3072	PA 68 GG	245	43	27.5	120
14-3074	PA 70 GG	240	44	28	120
14-3076	PA 72 GG	225	42	29	120
14-3078	PA 74 GG	212	40	30	120

Polyester meshes (PES) available upon request in most GG grades