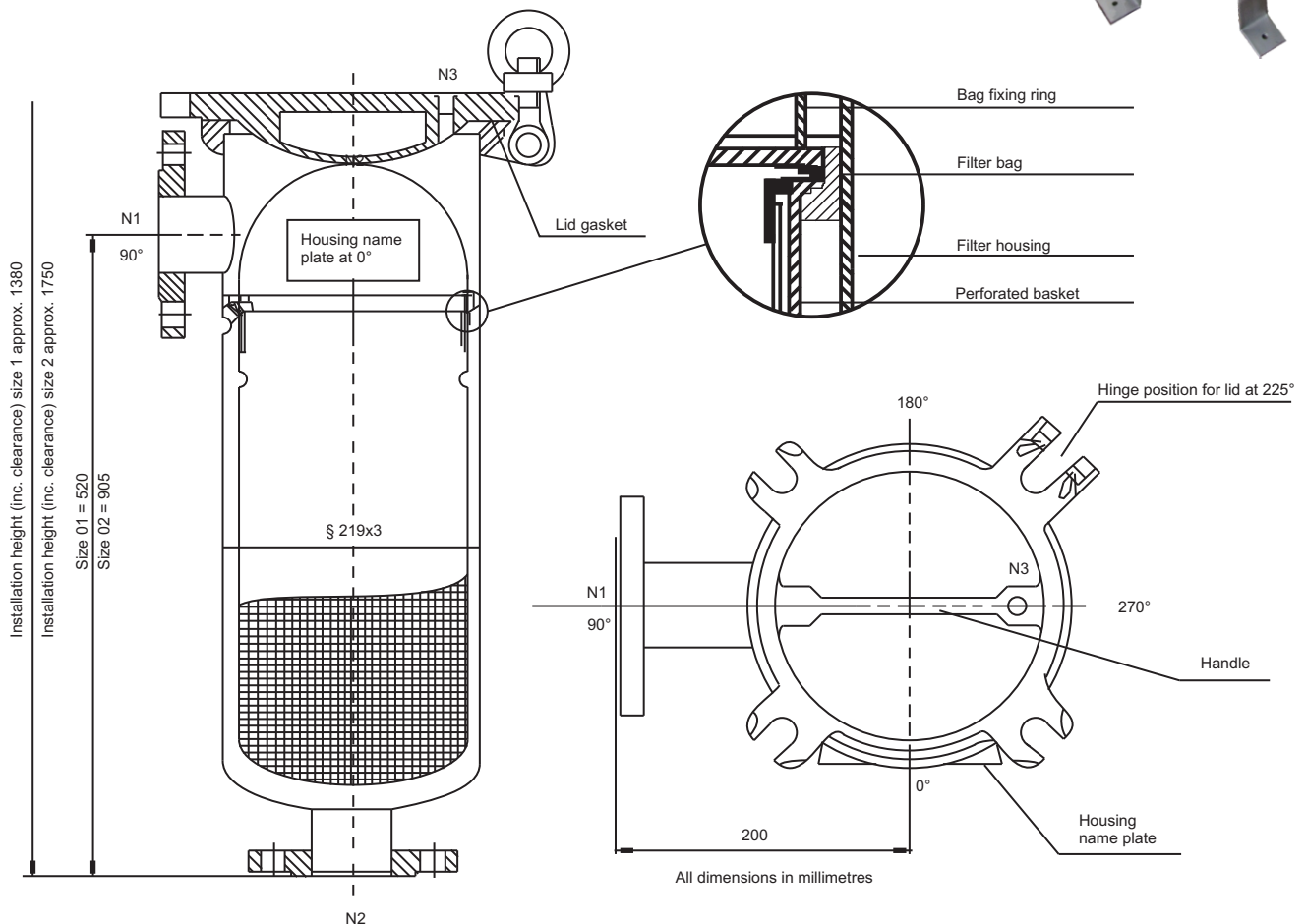


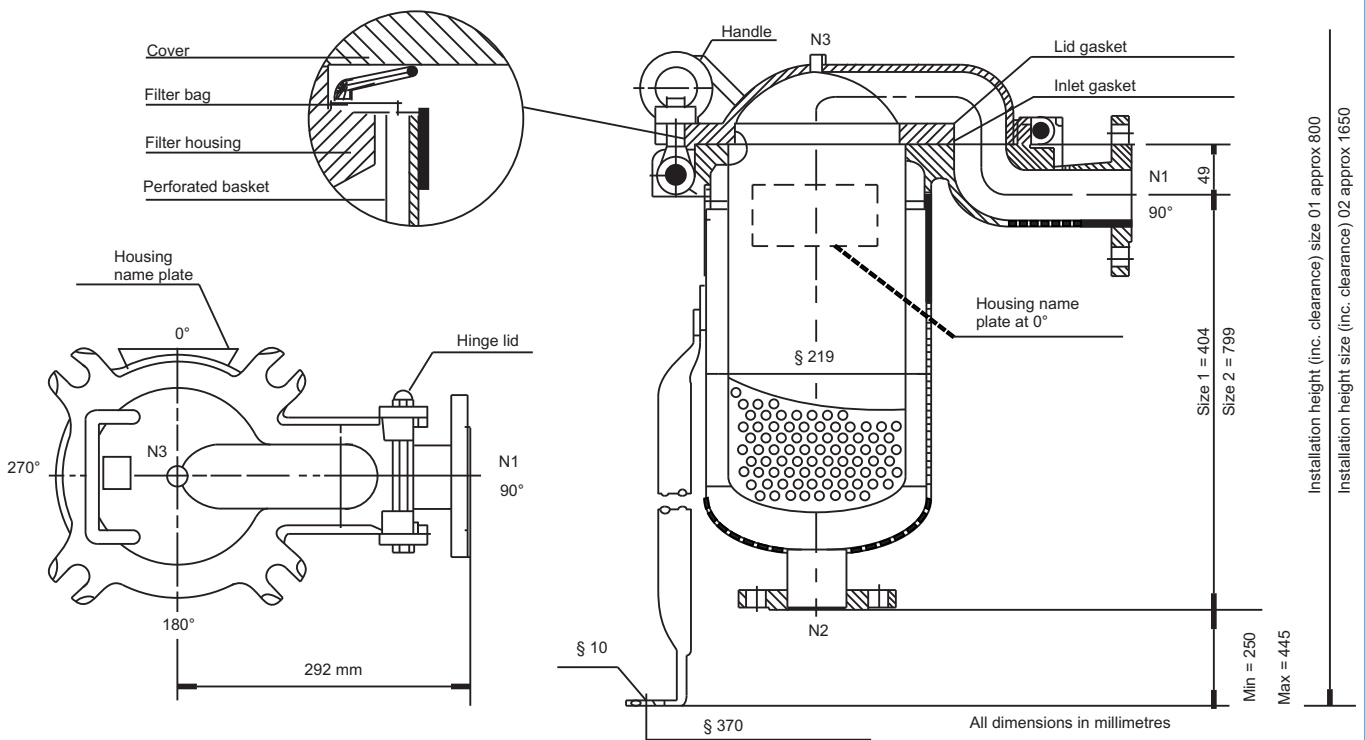
# Side entry pressure vessels

Part No.	Model No.	Part No.	Model No.
10-6002	S-101	10-6003	S-102
Specifications		Specifications	
Configuration	Side entry	Configuration	Side entry
No. of bags	One	No. of bags	One
Bag size	P1	Bag size	P2
Construction	304 stainless steel	Construction	304 stainless steel
Max pressure	10 bar @ 160 °C	Max pressure	10 bar @ 160 °C
Fitting type (N1&N2)	**ANSI flange	Fitting type (N1&N2)	**ANSI flange
Fitting size	50 mm (2")	Fitting size	50 mm (2")
Lid hole (N3)	6.4 mm (1/4") npt with plug	Lid hole (N3)	6.4 mm (1/4") npt with plug
*Max flow rate	20 m <sup>3</sup> /h	*Max flow rate	40 m <sup>3</sup> /h
Filter area	0.25 m <sup>2</sup>	Filter area	0.50 m <sup>2</sup>
Housing volume	18 litre	Housing volume	32 litre
Installation height	97 cm	Installation height	180 cm
Installation space	60 x 60 cm	Installation space	60 x 60 cm
*Depending on product viscosity		*Depending on product viscosity	
**Also available in B.S.P.		**Also available in B.S.P.	



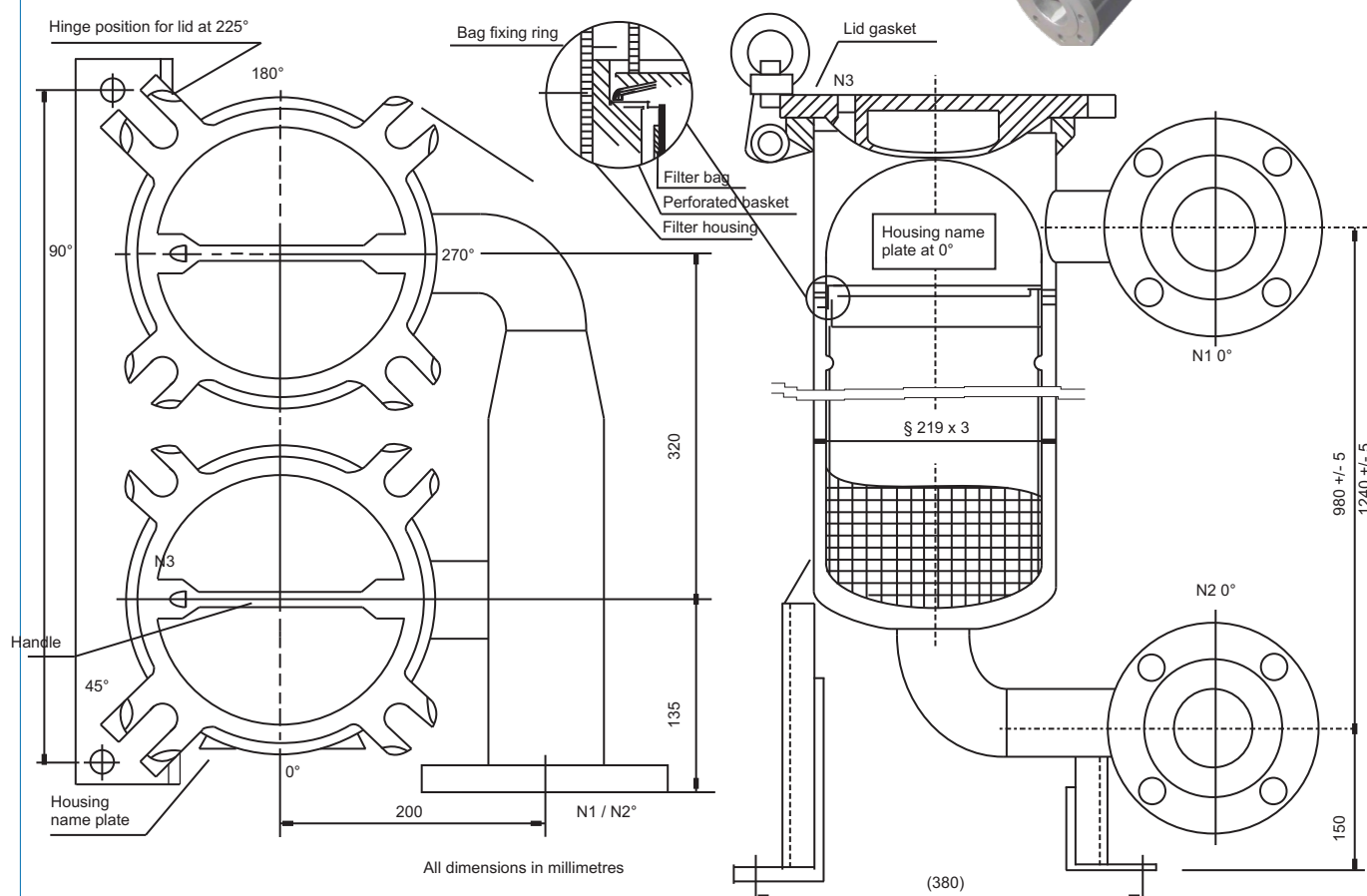
# Top entry pressure vessels

Part No.	Model No.	Part No.	Model No.
10-6004	T-101	10-6005	T-102
Specifications		Specifications	
Configuration	Top entry	Configuration	Top entry
No. of bags	One	No. of bags	One
Bag size	P1	Bag size	P2
Construction	304 stainless steel	Construction	304 stainless steel
Max pressure	10 bar @ 160 °C	Max pressure	10 bar @ 160 °C
Fitting type (N1&N2)	**ANSI Flange	Fitting type (N1&N2)	**ANSI flange
Fitting size	50 mm (2")	Fitting size	50 mm (2")
Lid hole (N3)	6.4 mm (1/4") npt with plug	Lid hole (N3)	6.4 mm (1/4") npt with plug
*Max flow rate	20 m <sup>3</sup> /h	*Max flow rate	40 m <sup>3</sup> /h
Filter area	0.25 m <sup>2</sup>	Filter area	0.50 m <sup>2</sup>
Housing volume	13 litre	Housing volume	27.5 litre
Installation height	84 cm	Installation height	168 cm
Installation space	70 x 70 cm	Installation space	70 x 70 cm
*Depending on product viscosity		*Depending on product viscosity	
**Also available in B.S.P.		**Also available in B.S.P.	



# Tandem side entry pressure vessel

Part No.	Model No.
10-6020	S-202
Specifications	
Configuration	Side entry
No. of bags	Two
Bag size	P2
Construction	304 stainless steel
Max pressure	10 bar @ 160 °C
Fitting type (N1&N2)	**ANSI flange
Fitting size	50 mm (2")
Lid hole (N3)	6.4 mm (1/4") npt with plug
*Max flow rate	80 m <sup>3</sup> /h
Filter area	1.0 m <sup>2</sup>
Housing volume	64 litre
Installation height	124 cm
Installation space	50 x 50 cm
*Depending on product viscosity	
**Also available in B.S.P.	



# Tandem top entry pressure vessel

Part No.	Model No.
10-6010	T-202
Specifications	
Configuration	Top entry
No. of bags	Two
Bag size	P2
Construction	304 stainless steel
Max pressure	10 bar @ 160 °C
Fitting type (N1&N2)	**ANSI flange
Fitting size	50 mm (2")
Lid hole (N3)	6.4 mm (1/4") npt with plug
*Max flow rate	80 m <sup>3</sup> /h
Filter area	1.0 m <sup>2</sup>
Housing volume	55.5 litre
Installation height	110 cm
Installation space	50 x 50 cm
*Depending on product viscosity	
**Also available in B.S.P.	

